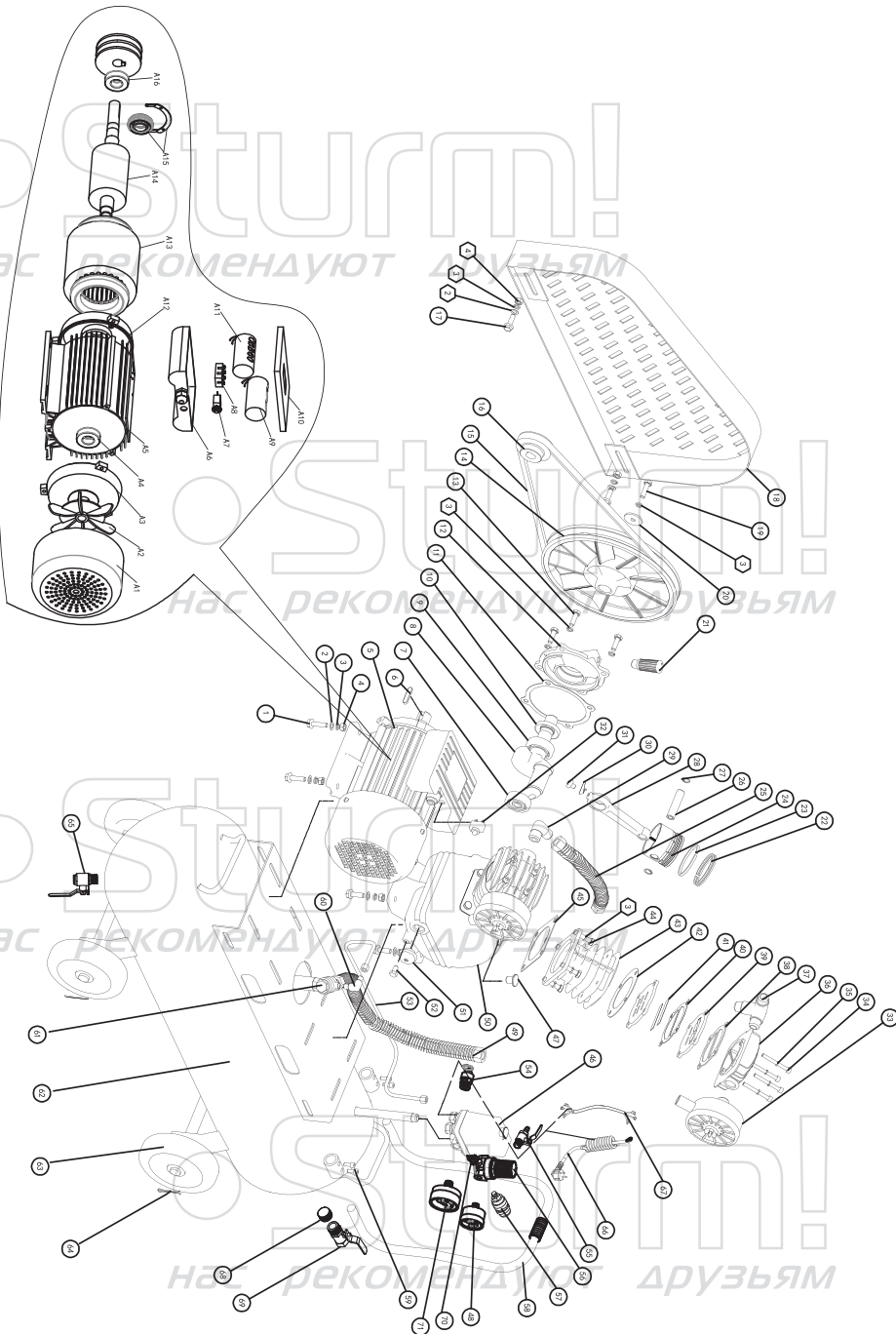


AC93250B



No.	DESCRIPTION	No.	DESCRIPTION
1	screw	43	cylinder
2	washer	44	screw
3	washer	45	cylinder gasket
4	nut	46	pressure switch
5	motor Y90L-4	47	oil plug
6	flat key	48	pressure gauge 40
7	bearing 6204	49	inlet pipe
8	crankshaft	50	crank case
9	bearing 6205	51	oil mirror
10	oil seal	52	screw
11	front cover gasket	53	release pipe
12	crankcase front cover	54	safety valve
13	screw	55	1 / 4 ball Valve
14	belt pulley	56	regulator
15	belt	57	quick connection
16	motor pulley	58	handle
17	screw	59	screw
18	mesh cover	60	elbow
19	screw	61	check valve
20	blocking plate	62	Tank
21	breather	63	wheel
22	gas ring	64	split pin
23	oil ring	65	drain valve
24	piston	66	cable with plug
25	connection pipe	67	connection cable
26	piston pin	68	air tank plug
27	spring clip	69	1 / 2 ball Valve(optional)
28	rod	A1	fan cover
29	exhaust elbow	A2	fan
30	oil pin	A3	back cover
31	screw	A4	bearing 6205
32	current protector	A5	motor housing
33	air filter	A6	capacitor box
34	screw	A7	over-current protector
35	washer	A8	terminal
36	cylinder head	A9	start capacitor
37	tee joint	A10	capacitor box cover
38	cylinder head gasket	A11	running capacitor
39	valve plate	A12	front cover
40	aluminum gasket	A13	stator including winding
41	valve plate	A14	rotor
42	valve plate gasket	A15	centrifugal switch assembly
		A16	bearing 6205

AC93250B-EX-RUS220830